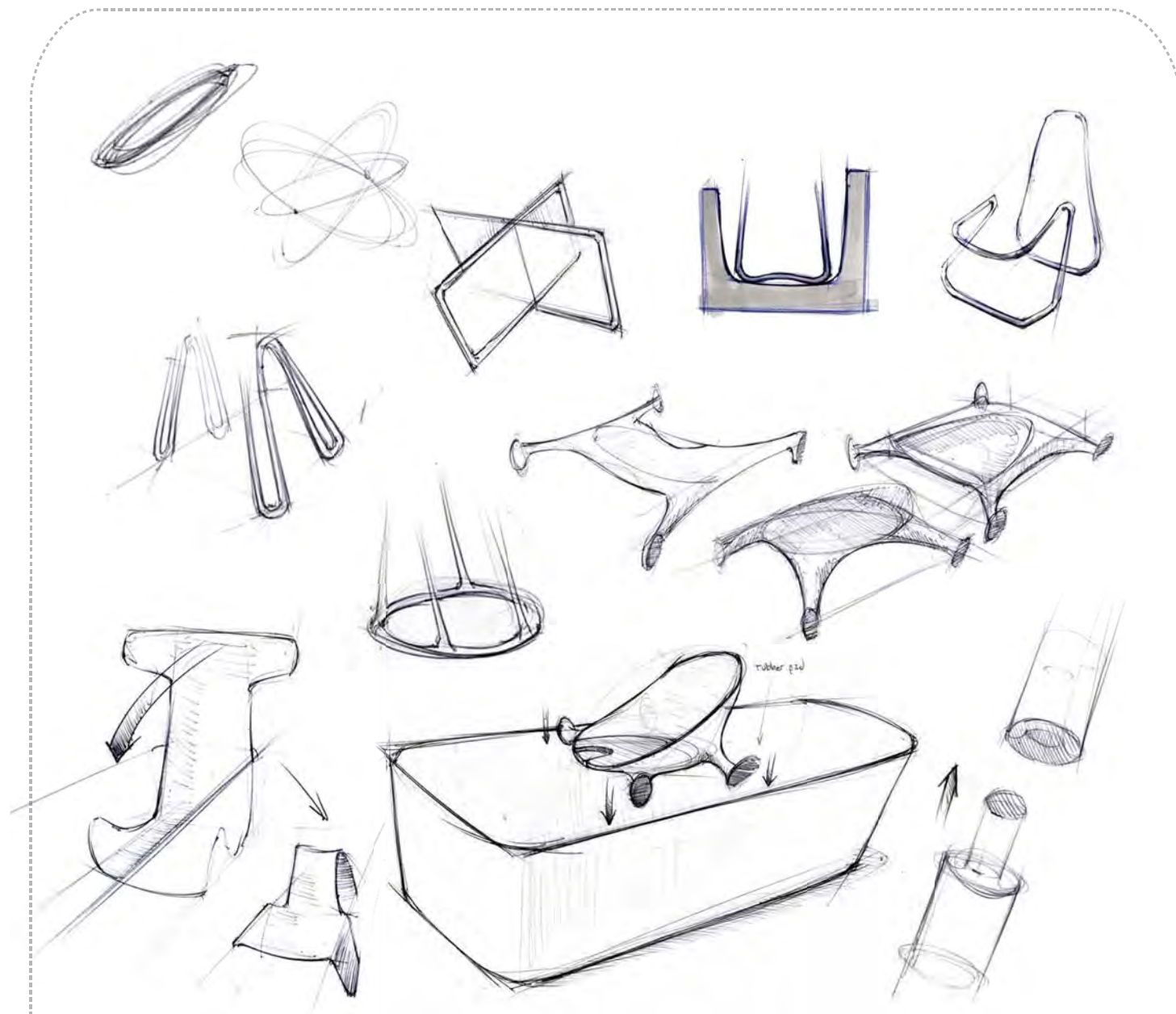


Jack Foley

-5th Prize

Final Graham Field Presentation



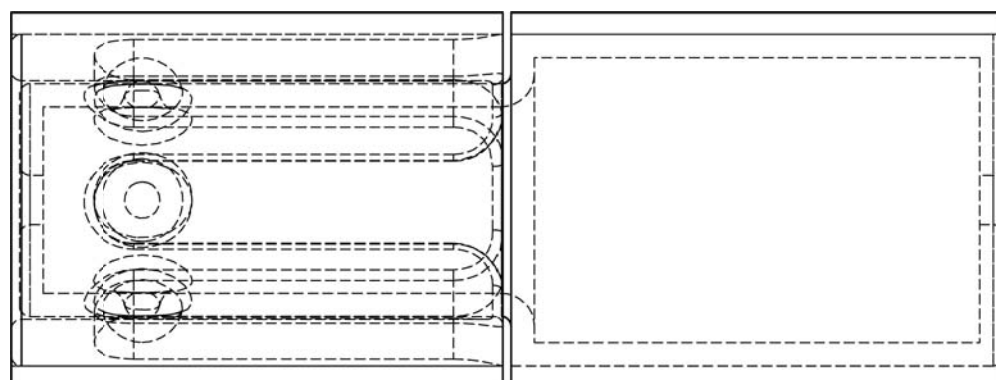


conceptual ...

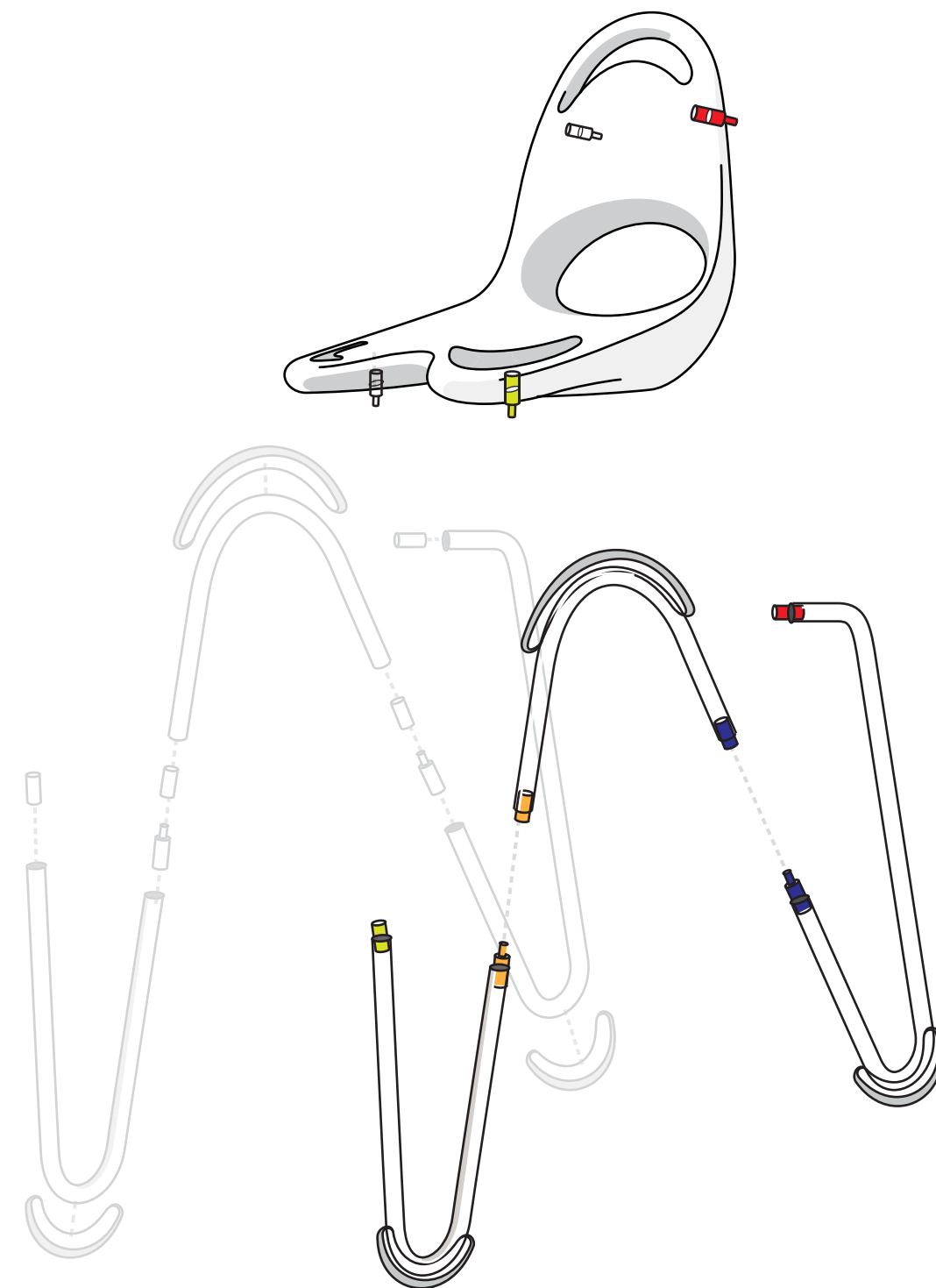


and formal development





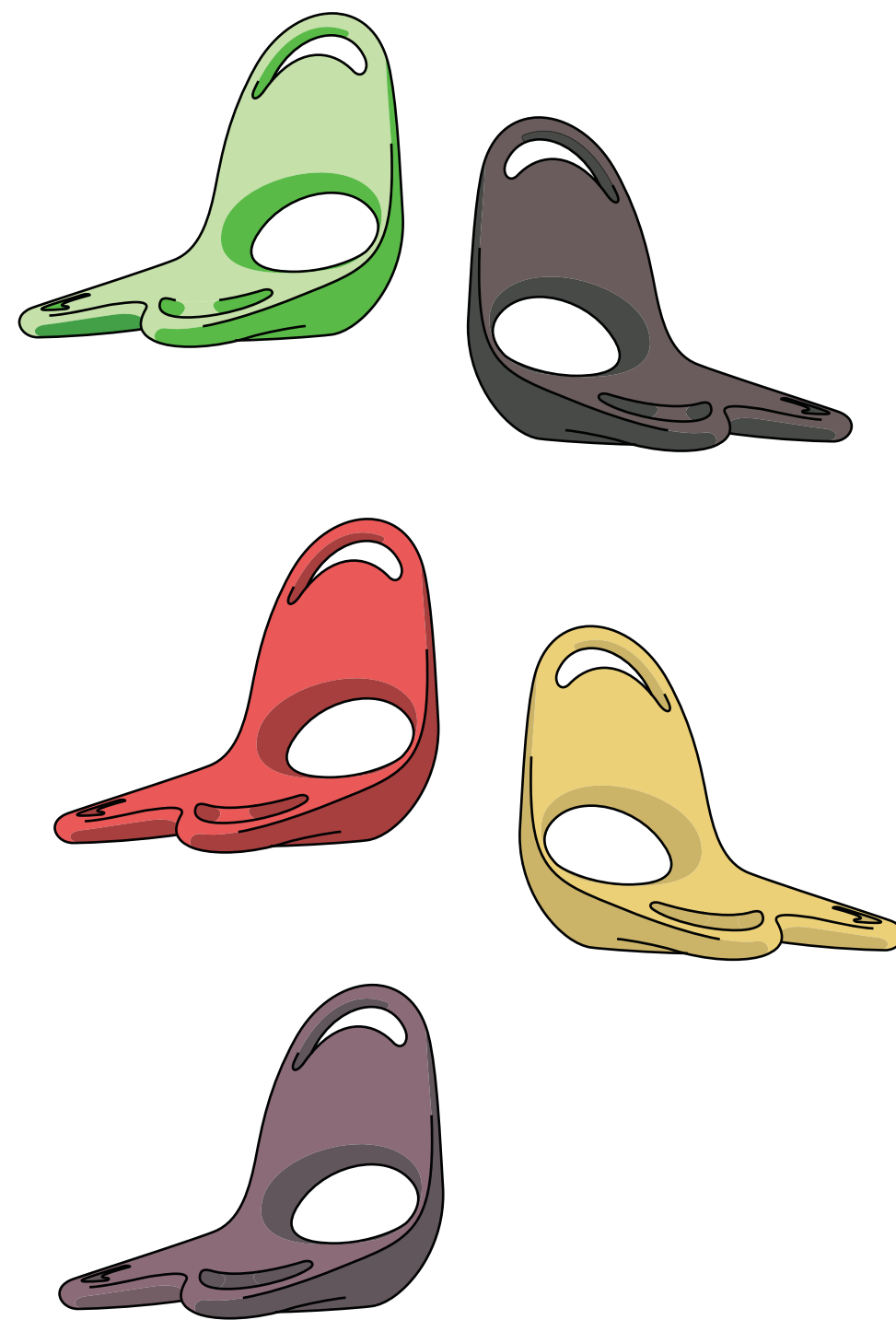
the connection...



and connecting

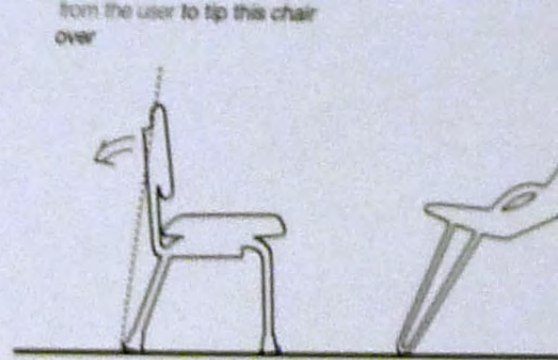


exploded view



colorways







Alvaro Uribe

-4th Prize



Graham Field Final Presentation

Abstract Sketches

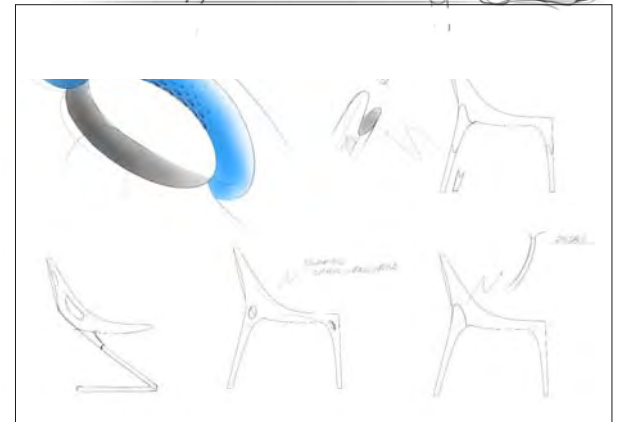
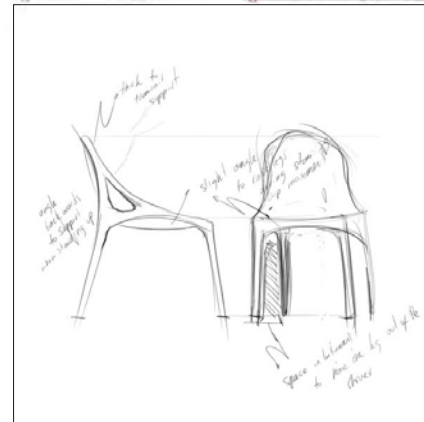
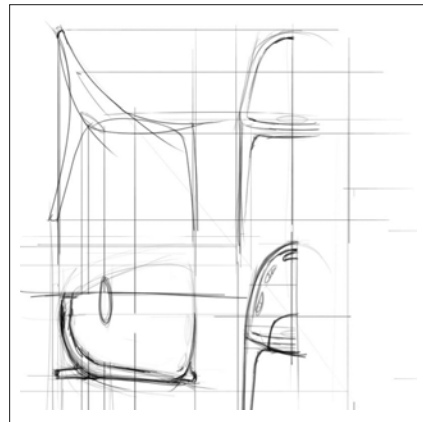
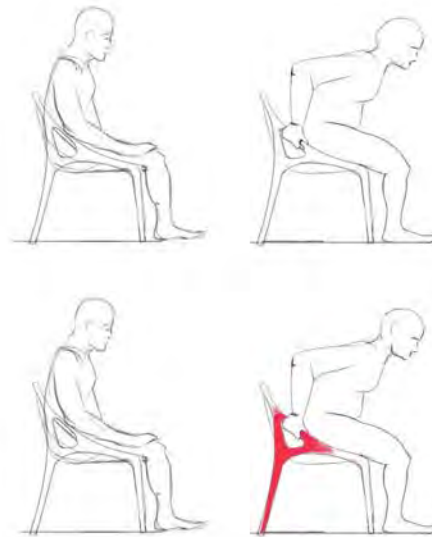
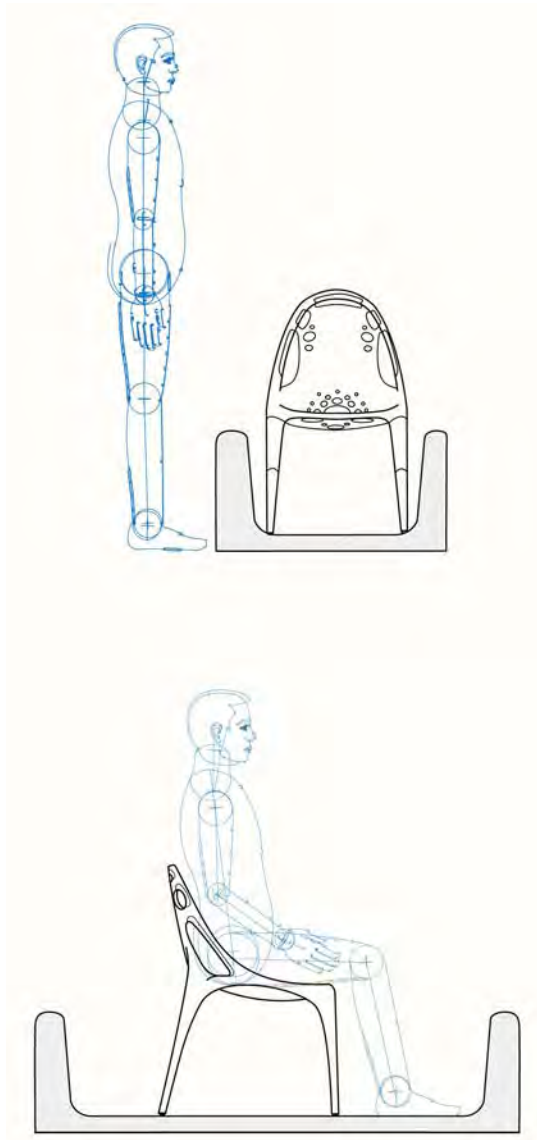


Early Sketches

Transition from abstract to functional forms through 3D exploration.



Development



Final Iterations

LUMEX GRIP
CONCEPT 2



LUMEX GRIP
CONCEPT 4



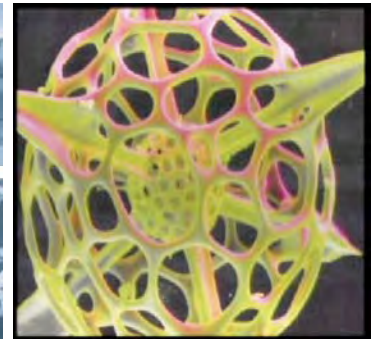
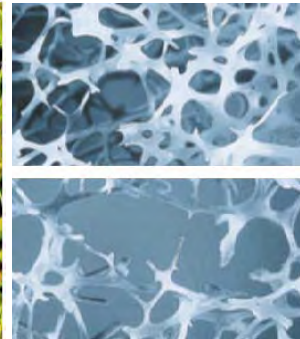
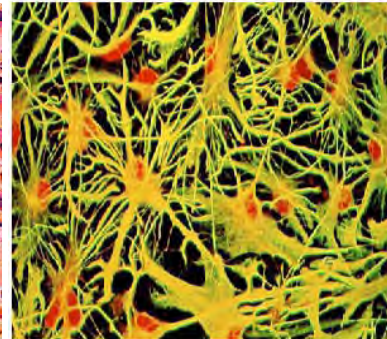
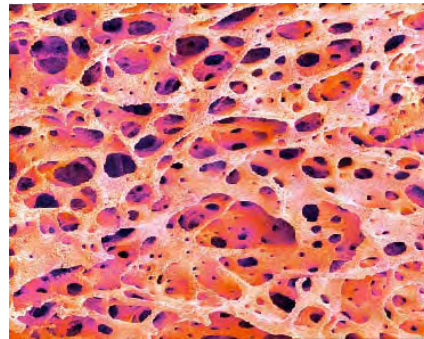
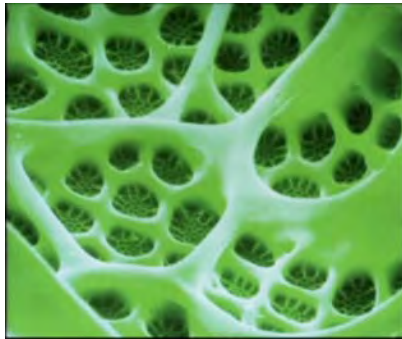
CONCEPT 1
LUMEX GRIP



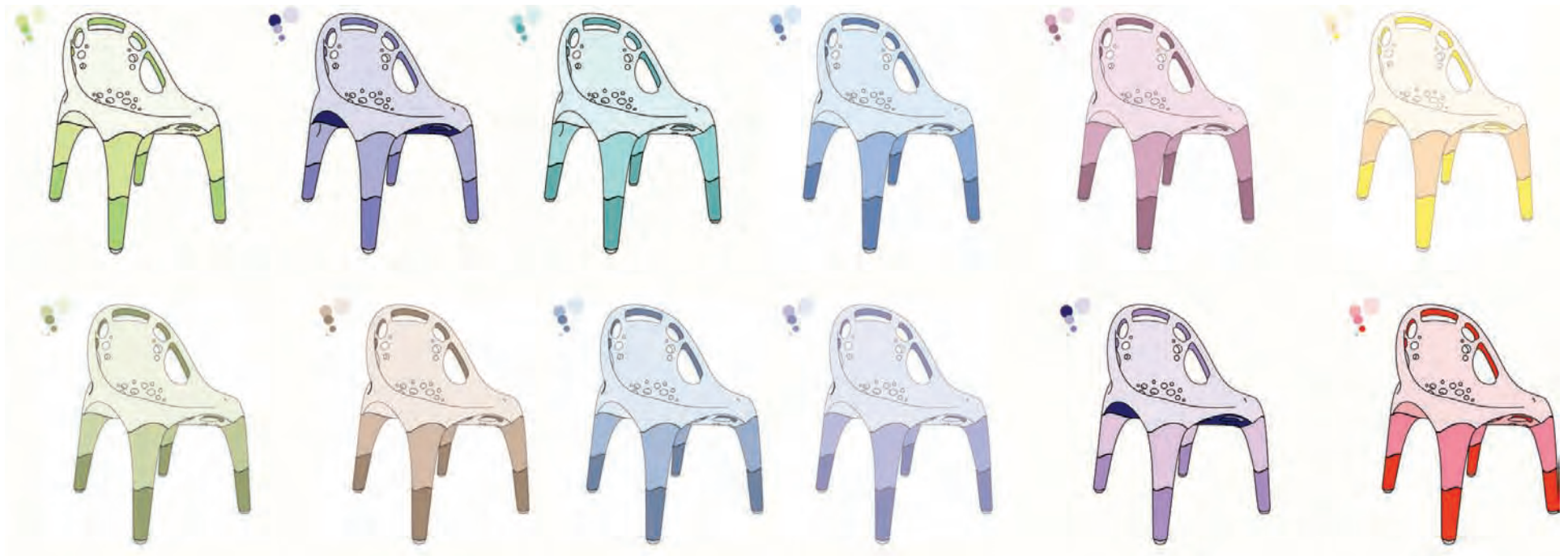
LUMEX GRIP
CONCEPT 5



Inspiration



Color Explorations



User Interactions



Getting In and Out



Final Concept



LUMEX
A Graham Field Brand

Grip Bath Chair



Color Options



User Interactions

Reaching up / Reaching down



LUMEX
A Graham Field Brand

Design Process

Abstract Sketches



Early Sketches



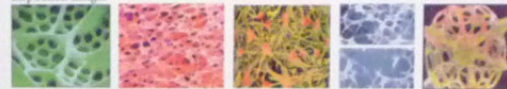
Form focus



Development



Inspiration Images



Final Iterations

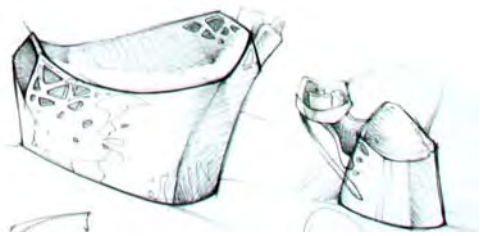


Iterations



Aaron Street

-3rd Prize



Graham Field Final Presentation





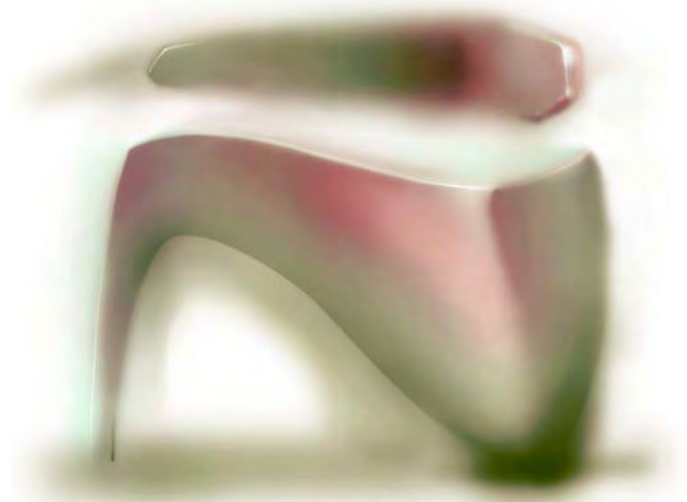
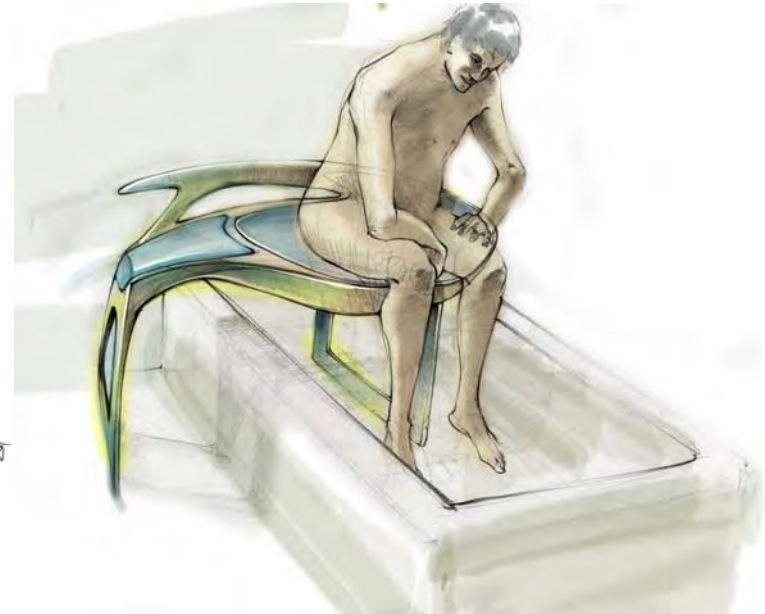
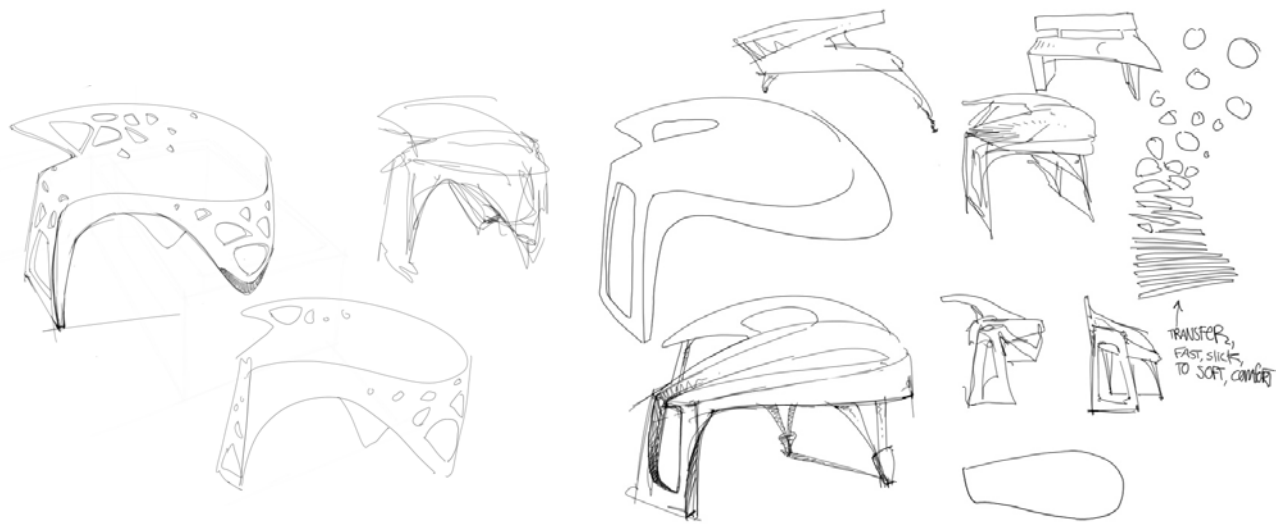
Early Sketches

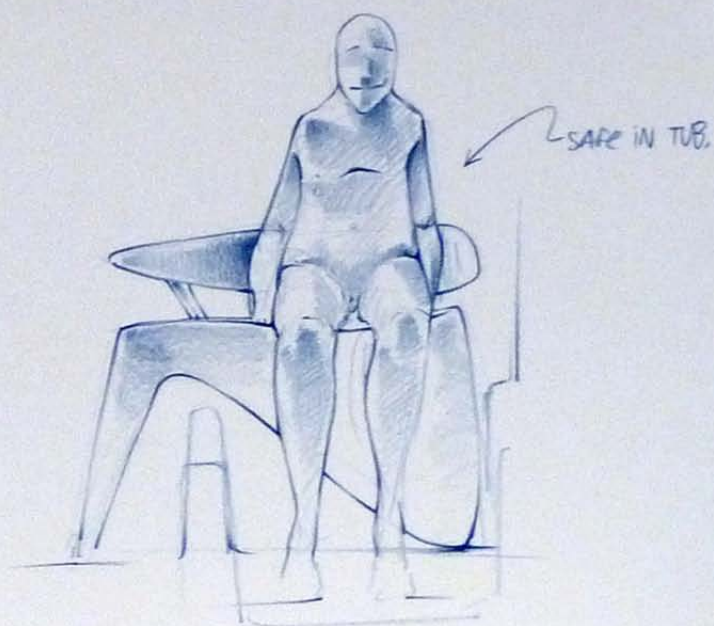
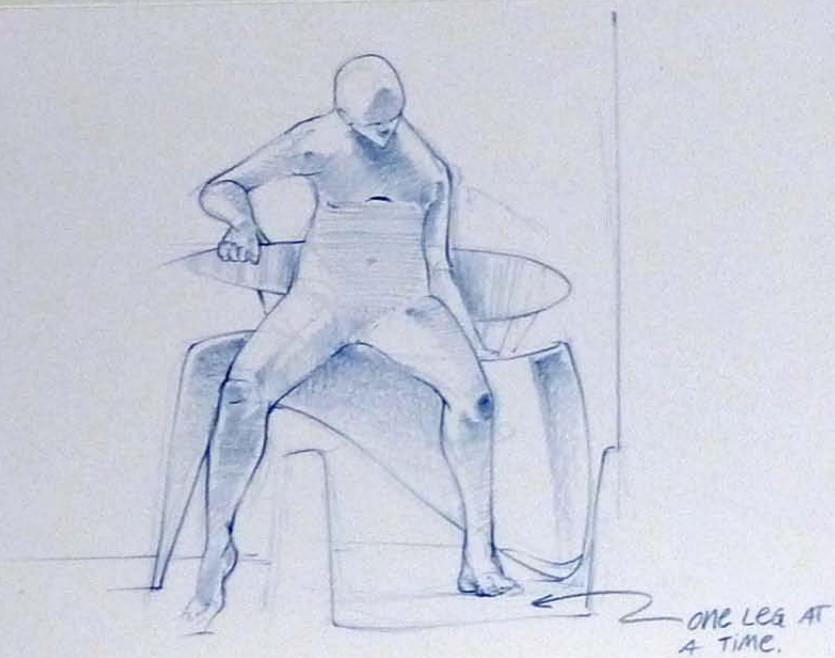
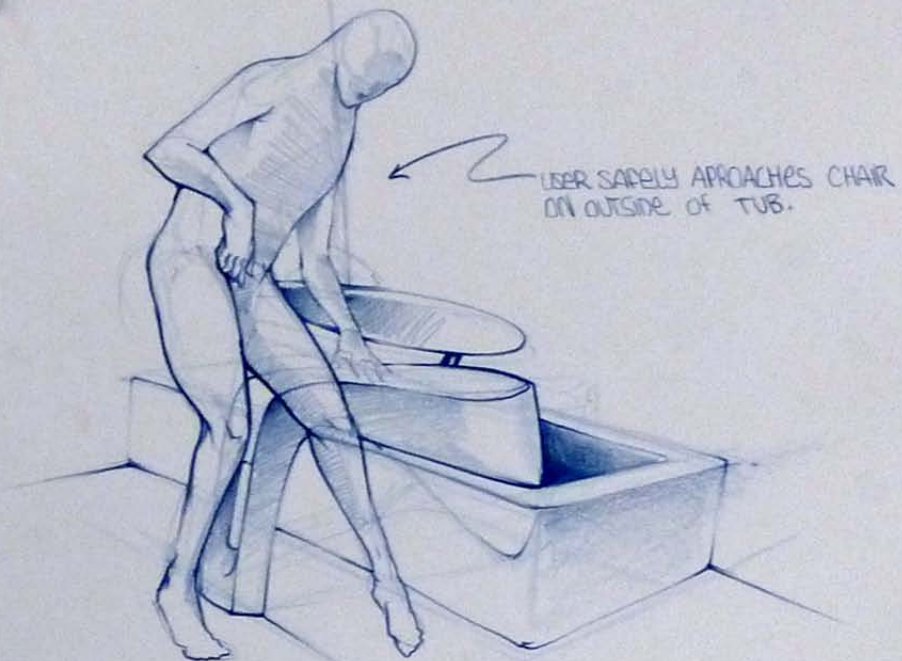


Ideation through Drawing



Development











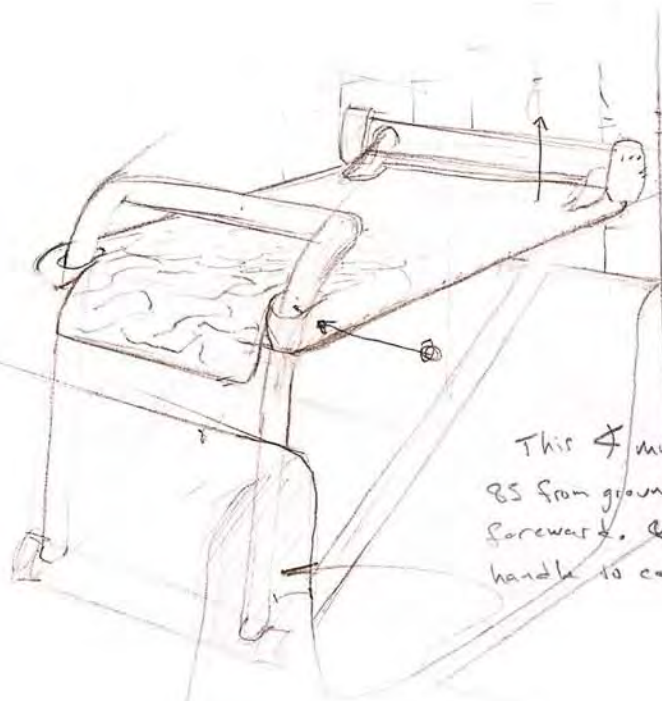
Evan Dewhirst

-2nd Prize



Graham Field Final Presentation

Concept Development



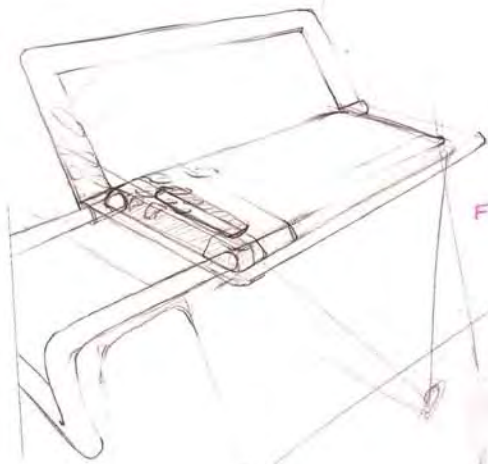
CONCEPT 1.

- TRIANGULATION FOR STABILITY.
- WEDGED BETWEEN THE TUB CORNER AND THE OPPOSITE WALL.
- BUILT IN BATHTUB REQUIRED!

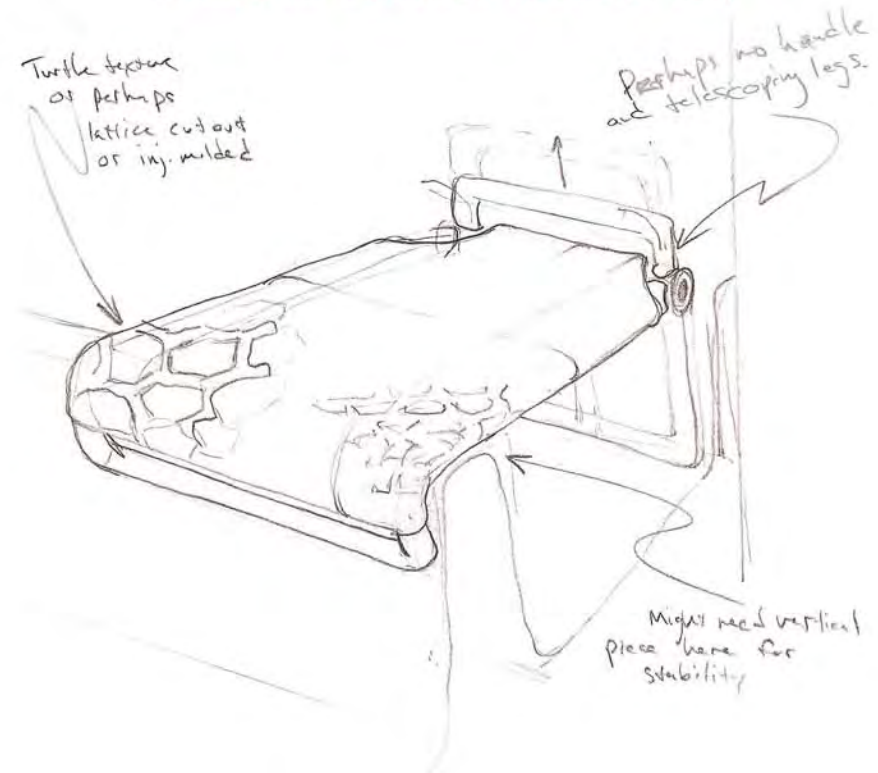
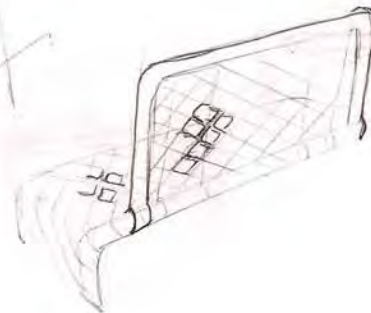
This must be kept below 85 from ground so pressure goes forward, else height of handle to control this.

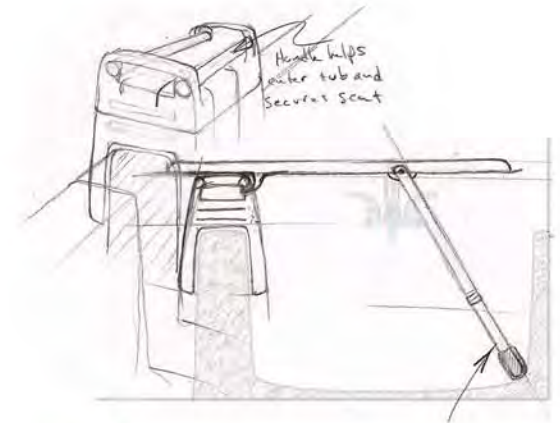
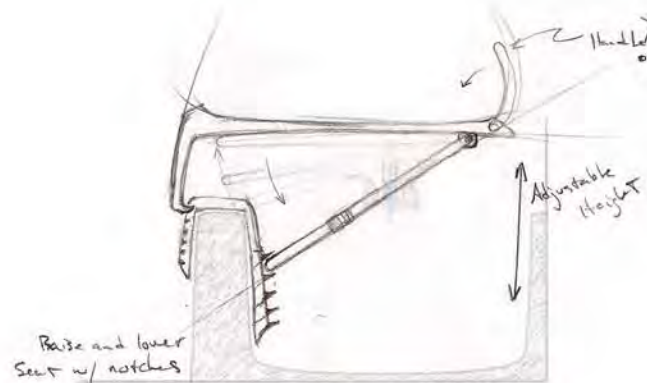
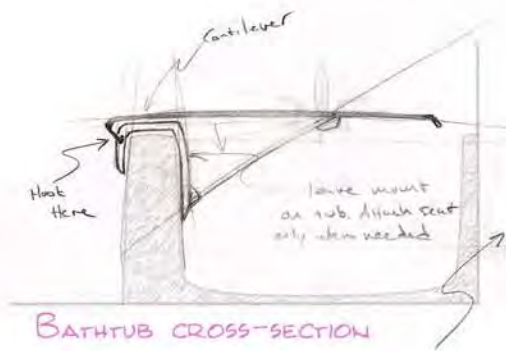
CONCEPT 2.

- WITHOUT TUB WALL ATTACHMENT SEAT ONLY PROVIDES ONE HEIGHT.
- BATHTUB PROVIDES OPPOSITE LEG.



FLIP-UP SEAT CONCEPT

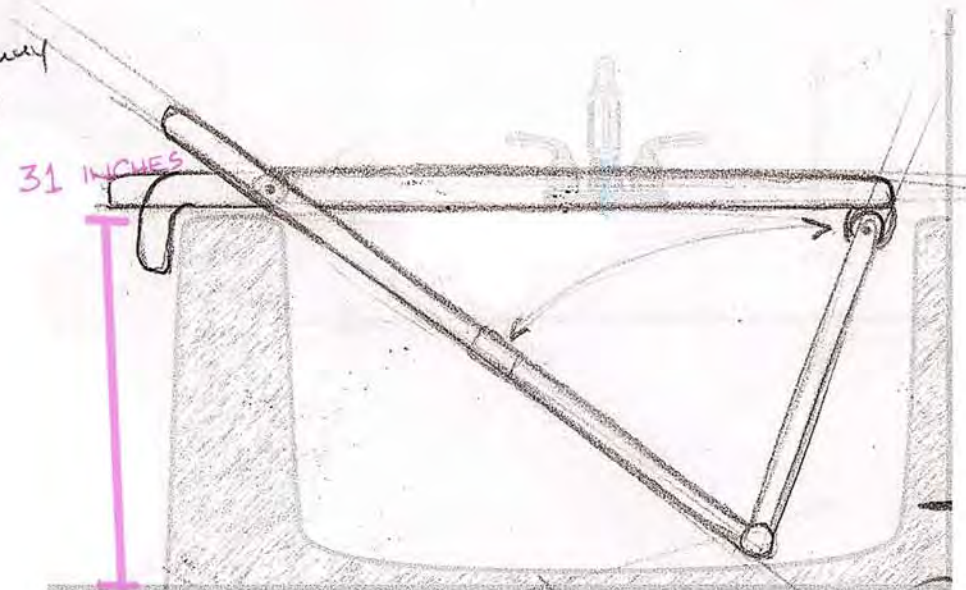
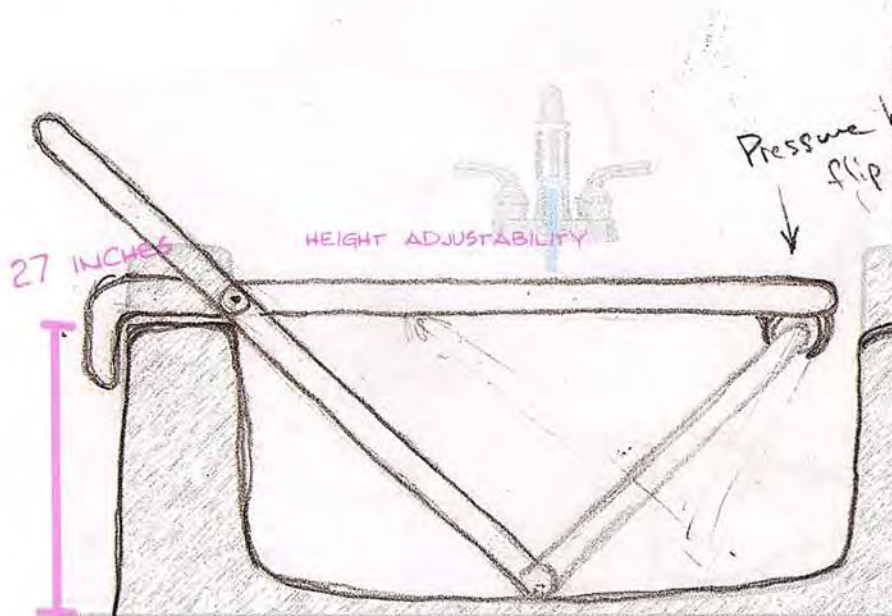




TUB ATTACHMENT- ADDED STABILITY WHILE ENTERING THE TUB OR SEATED.

The virtues of this concept I define as:

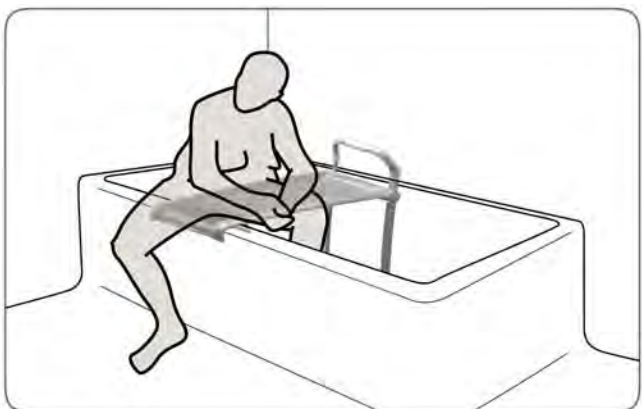
- **Minimal**- in terms of space occupied while in use or stowed; also in the amount of material used.
- **Collapsible**- storage on a wall or in a closet is easy and shipping is cheap.
- **Beautiful**- this is a simple and elegant solution that when refined will be quite attractive to the modern consumer



Technical Development



Function



Color



Color

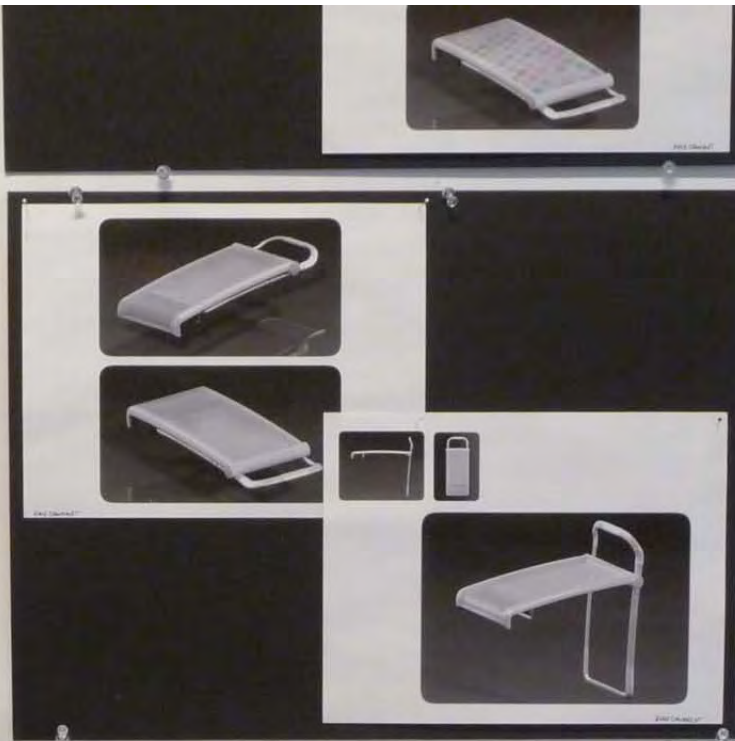


Color



Final Model



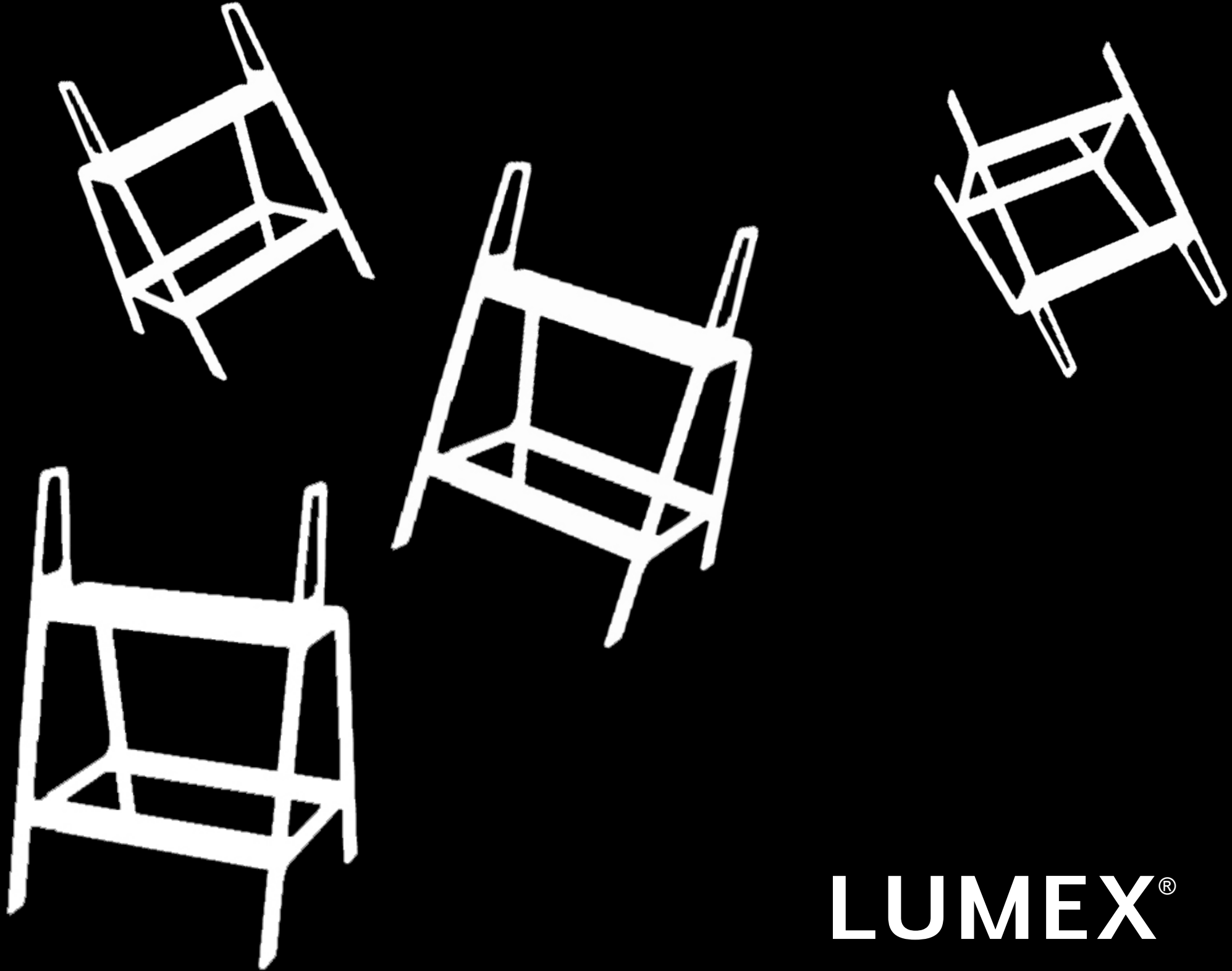


Jenny Jernstrom & Anna Alriksson

-1st Prize



Graham Field Final Presentation



LUMEX®

Our vision:

To redesign the shower chair for GFs lumex home care line so that it appeals to the whole family. To transform a product and object that have a dissable stamp on it, and replace it with a comforting helpfull visual language that says

-for everyone.

state board



*Dull
Disabled
Stagnated
Unstable*

future board



Safe
Clean
Neutral
Elegant



*What can be improved
>*

handle bars

footrest

backrest

lower body access



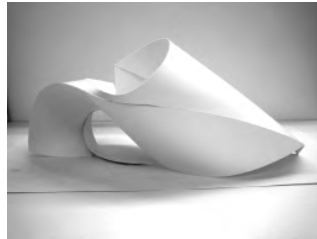
3D development



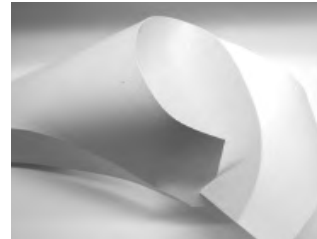
Plaster > organic shape



Bristol > hollow to volume closeup



Bristol > hollow to volume



Bristol > hollow to volume



Bristol > hollow to volume

3D development



*Neoprene & wire >
hollow to volume*



*Neoprene > folding
exploratory*



*Neoprene > folding
with wire frame*



*Paper > hollow to
volume*



*Paper > hollow to
volume*



3D development



Collection of sketch models>



Mock up model of bathroom >



Foam core model >

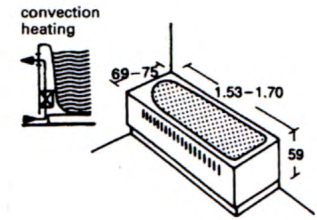
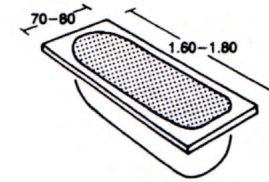
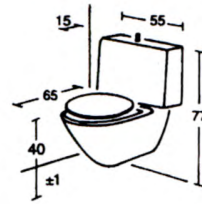


Foam core model > pattern backrest



Foam core model > with transparent backrest

observations



This grip> takes less strentght on your arms getting into standing position.



Handles> at two levels would avoid the break-down and feeling of falling into the chair.



Standing position > level of handles?



Having handles on your sides while showering, does it get in your way?



Could the shower head rest on the handles?

observations



Using shower chair as step stool.



Using one hand grip



Dimensions of handles test



Handles with two levels increased the stability when it allowed you to get up slow and with more support on the way up.

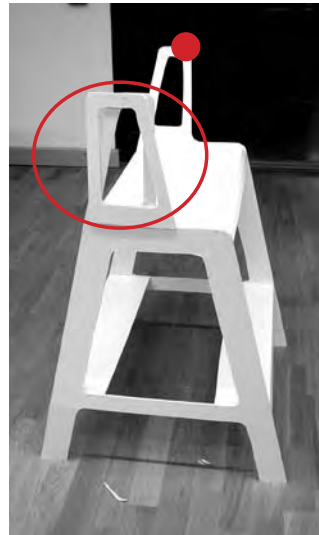
full scale



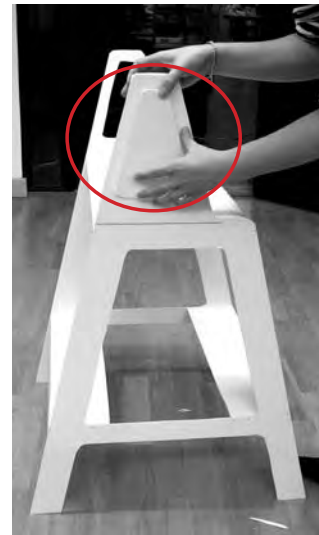
Scale 1:1 > to large, cover to much of the seat area and space on the sides.



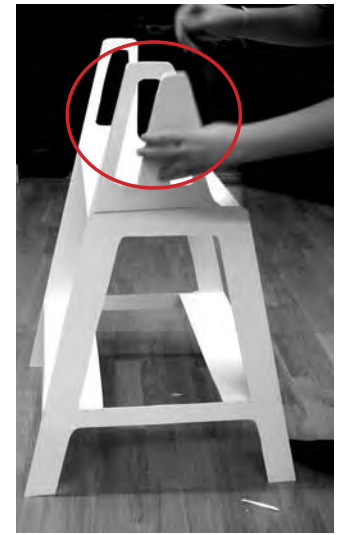
Scale 1:1 > to pointy, leaves not enough space for a comfortable grip from above.



Scale 1:1 > to squary, less stable with straight back contour.



Scale 1:1 > with the handle closed the purpose of it being a guide got lost.



Scale 1:1 > half closed made no sense and the stabile balance were interrupted.

full scale



Scale 1:1 model > placed in shower to simulate the proportion in its environment.



Scale 1:1 > close up with handles at the back

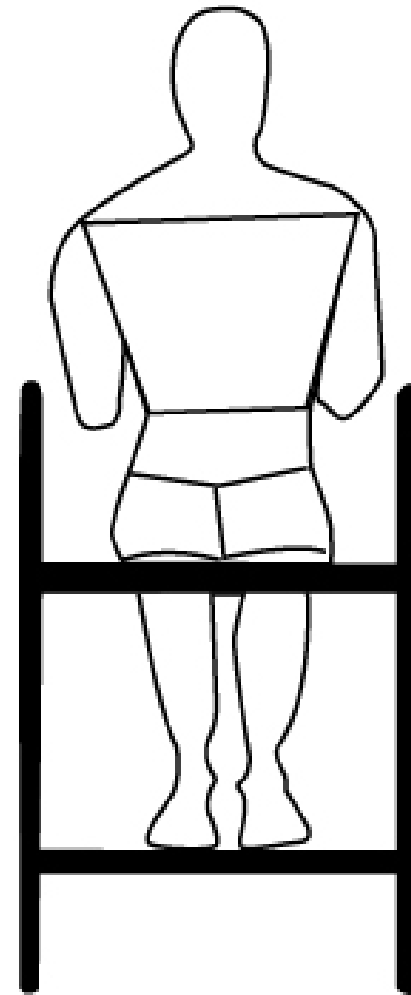
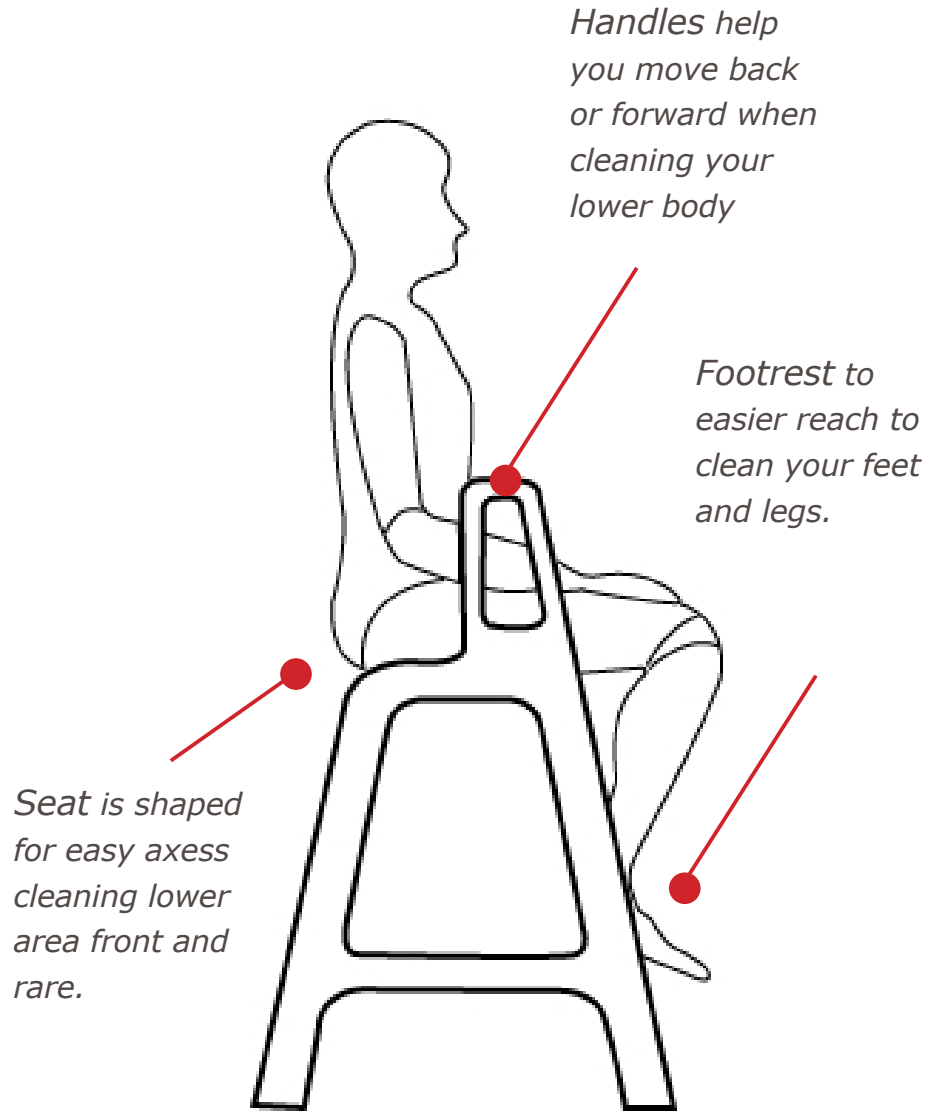


Scale 1:1 > turned close up with handles at the front.



Scale 1:1 > We tried simulating showering and different seating positions.

showering position



manufacturing technique



*Gas-assisted injection moulding
> polypropylen with glass-fiber
reinforcement.*

*+ light weight
+ superior finish
+ low unit cost
+ consumes 15%
less energy than
standard injection
moulding*

*Silicone coating.
Soft to touch, and
gives a good grip
when wet.*

Antimicrobial coating with KYDEX

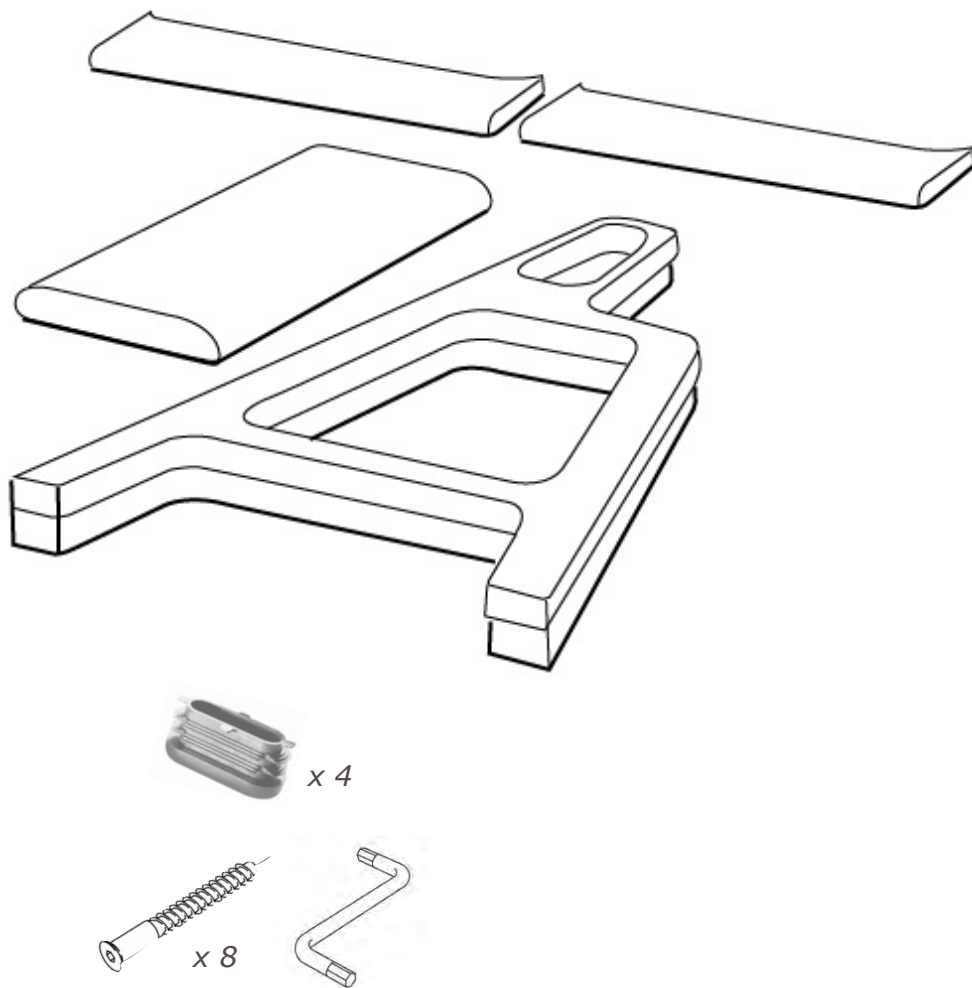
putting it together



*Aluminium profile inside
seating and footrest*

+ light weight
+ can be cut to different lengths for optional size in production.

flat pack & packaging



LUMEX®
For The Quality Of Life!



configuration

Step



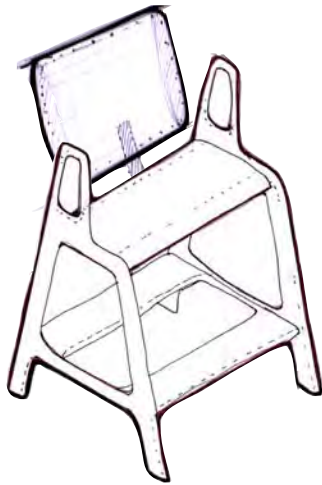
Step Generous



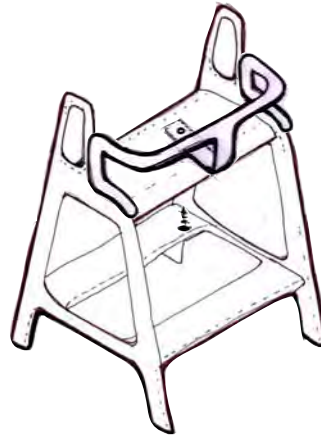
Step Kids



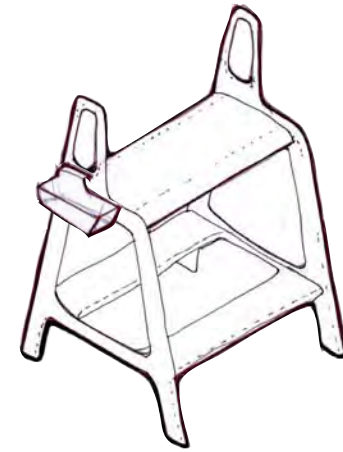
product extension



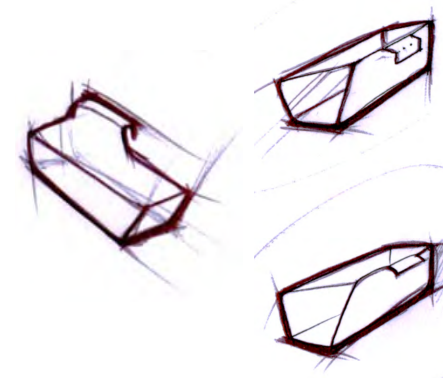
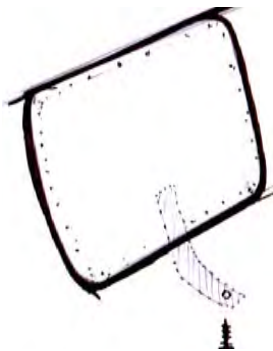
Backrest > attach under seat



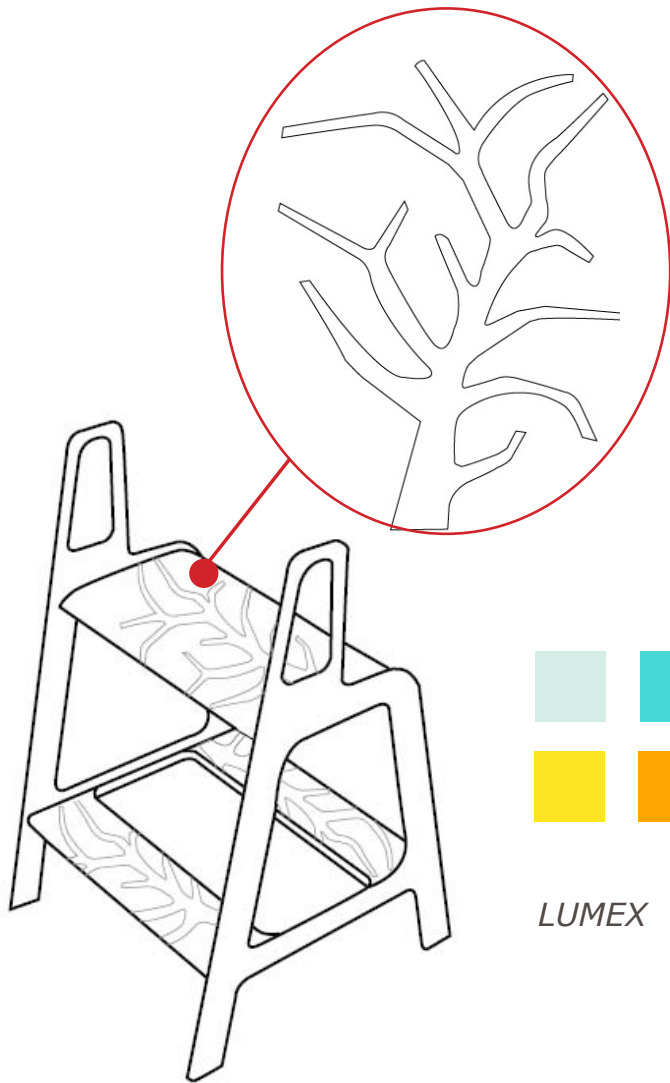
Kids > attach under seat



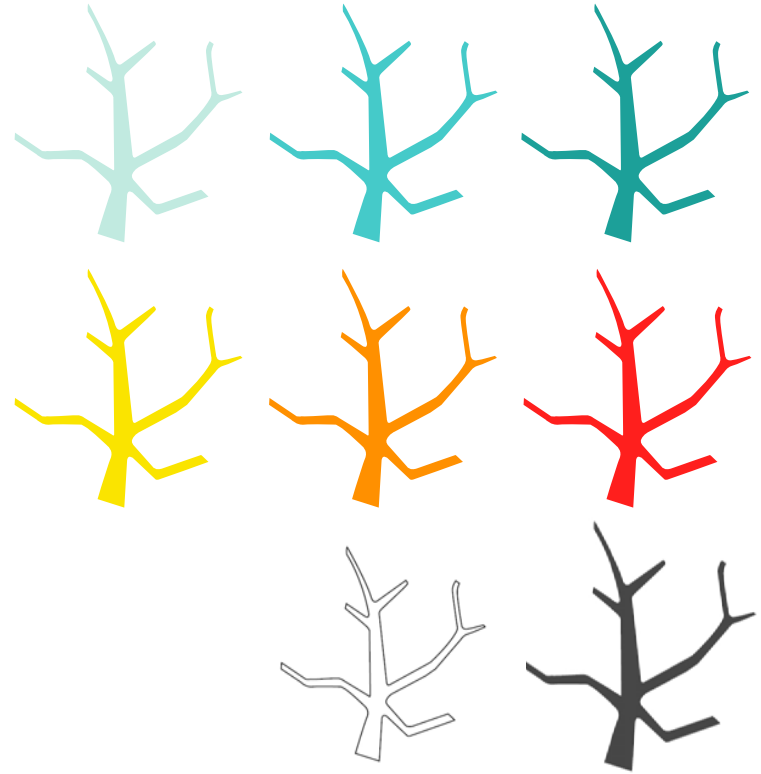
Basket > "hang on handle", for soap and shampoo.



product extension



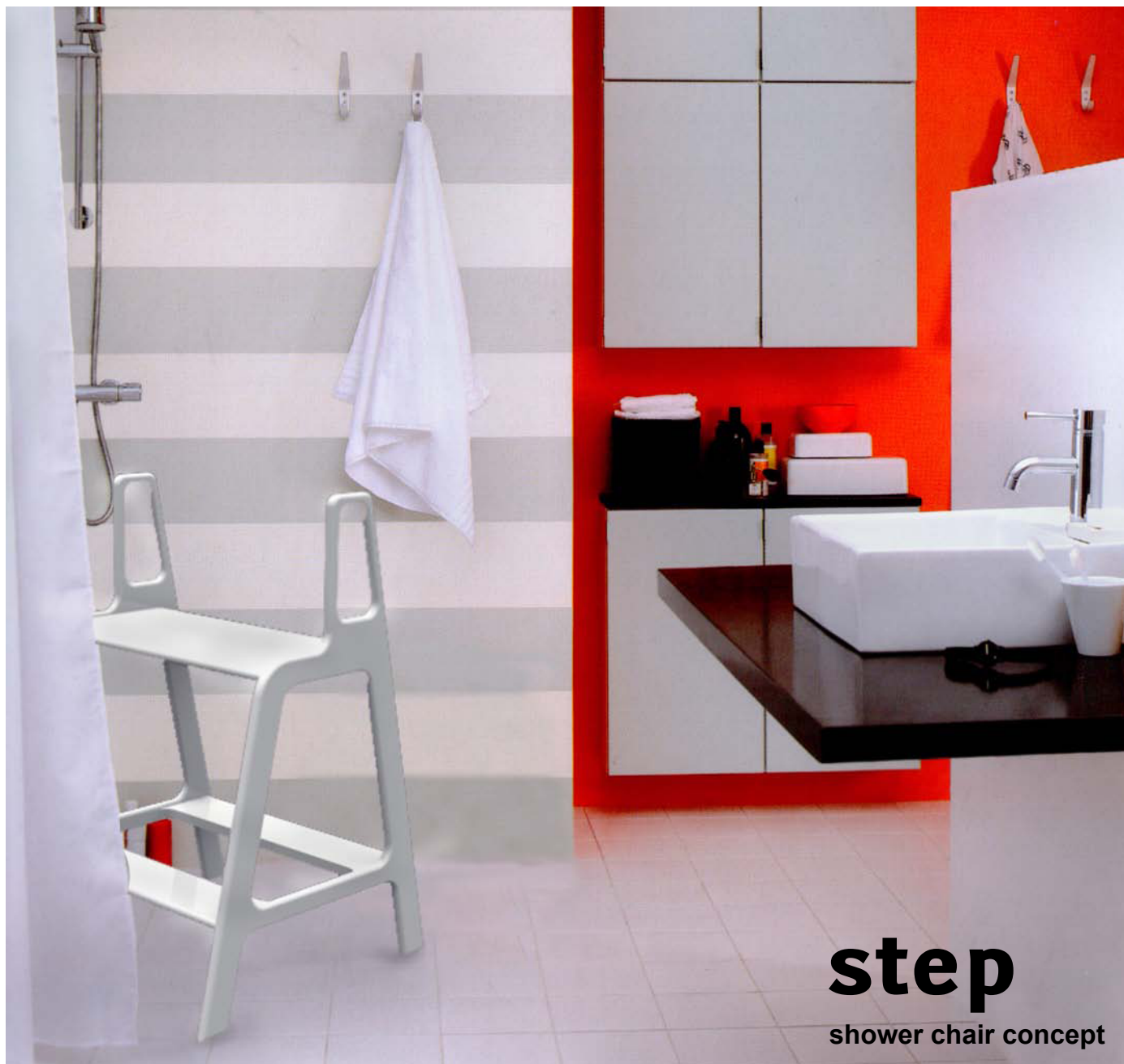
LUMEX colour line



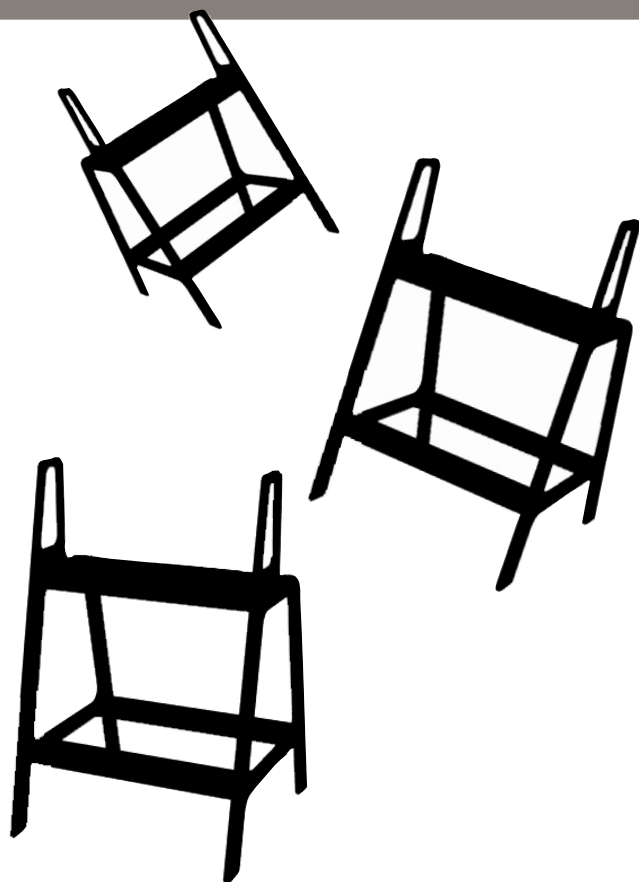
LUMEX kids & anti slip decoration

*Our vision is, if
you need step
it can go
anywhere...*





step
shower chair concept



LUMEX[®]

Design Philosophy

*All of our products
have been designed
with a single objective*

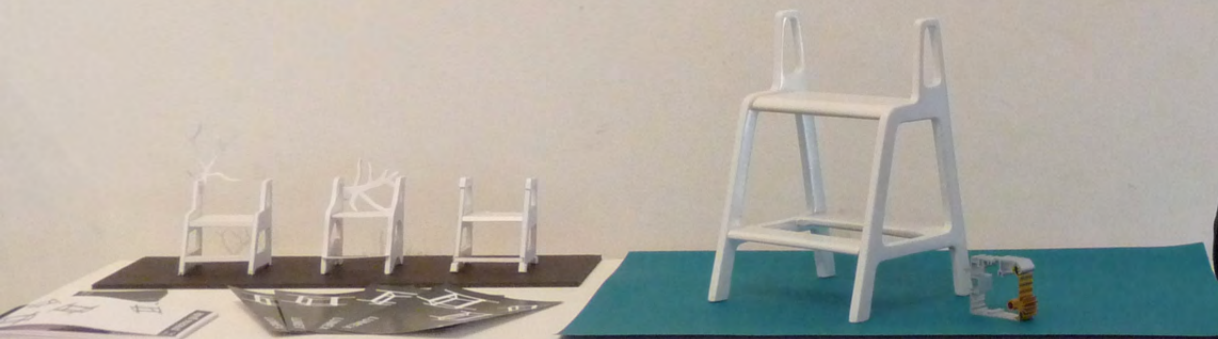
*- to enhance the
quality of life of
the people that use
our products and
their caregivers"*



Thank you >

*GF Health Products, Inc.
Senior Vice President Lawrence De La Haba
PRATT
Jeff Kapec
Sergio Silva*

/Jenny Jernström & Anna Alriksson



LUMEX®

